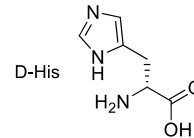
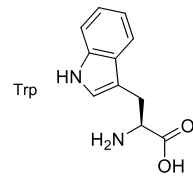
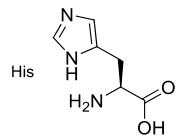
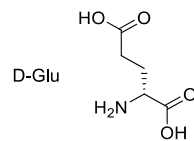
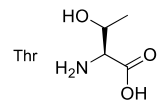
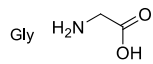
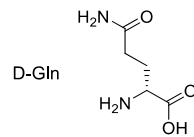
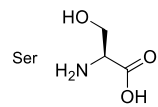
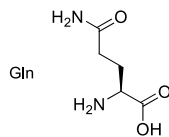
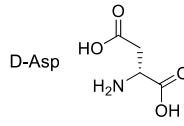
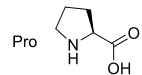
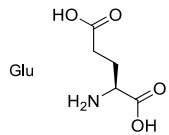
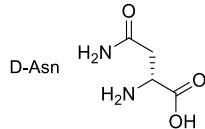
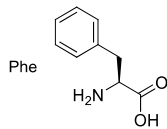
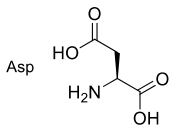
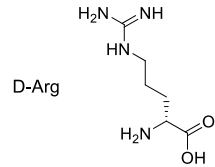
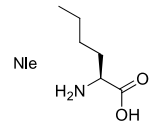
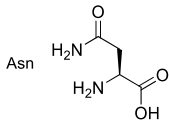
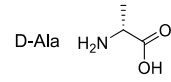
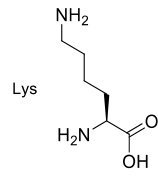
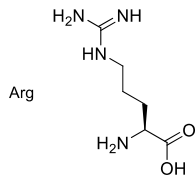
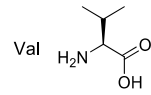
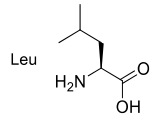
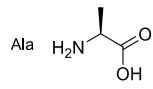
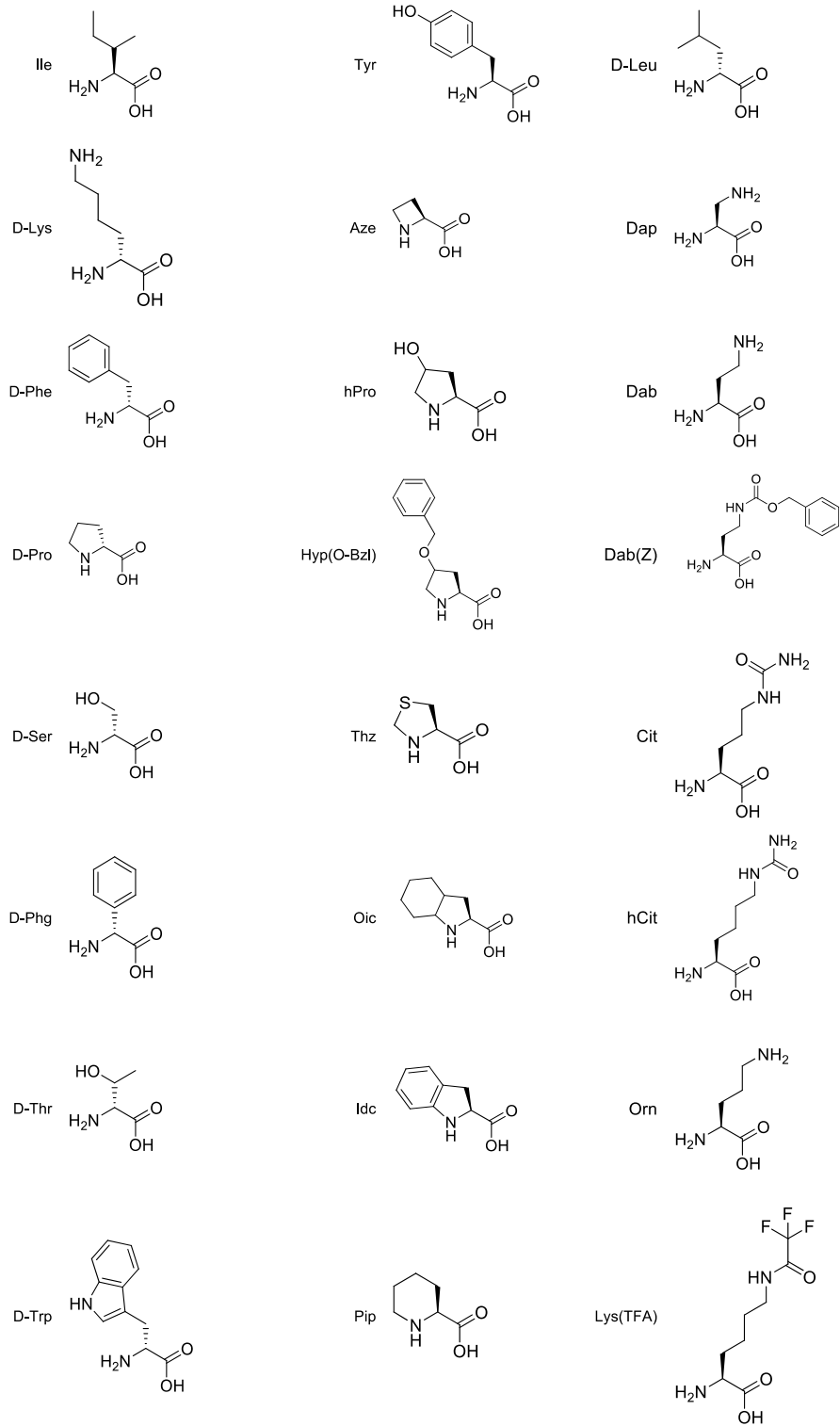
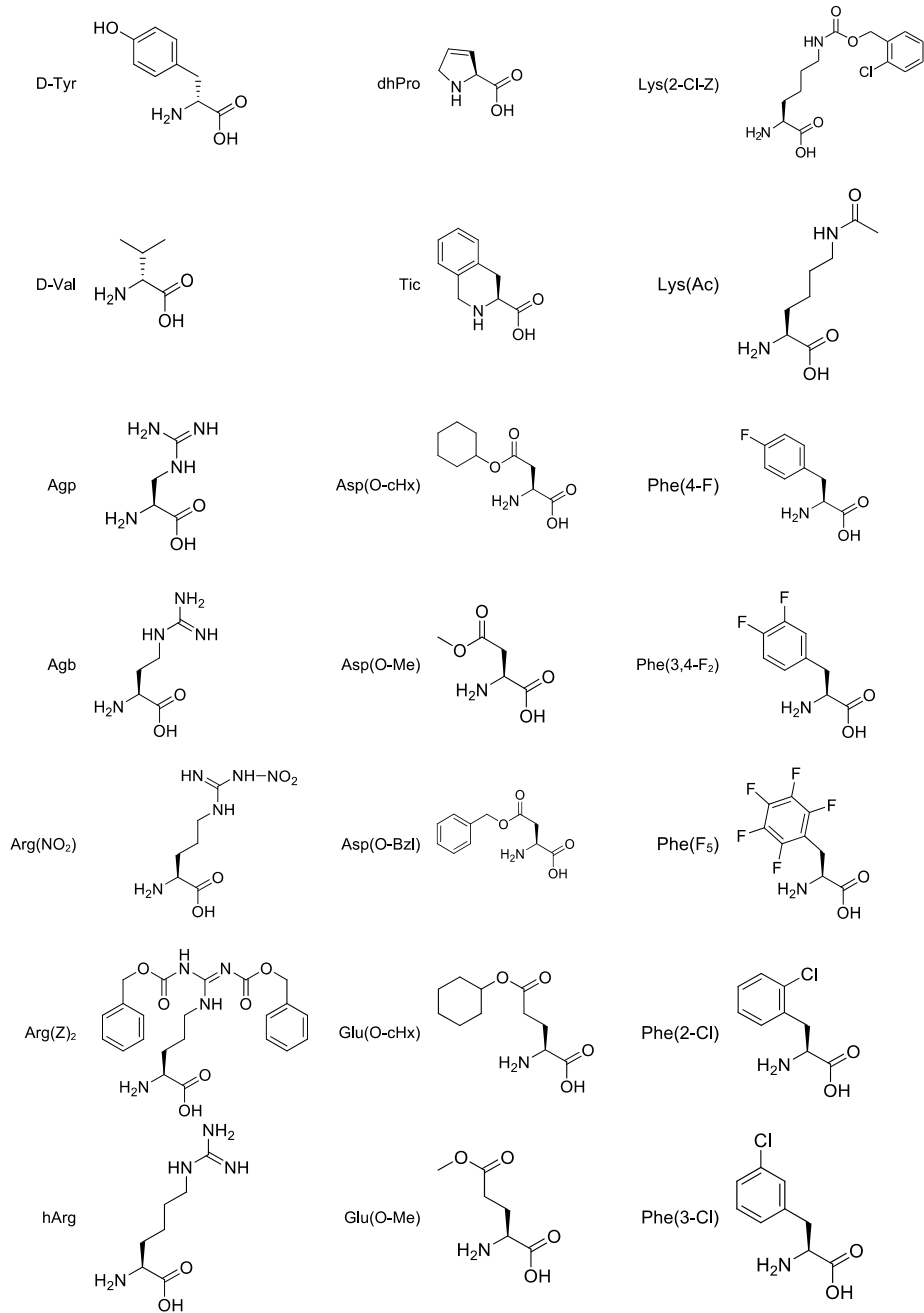


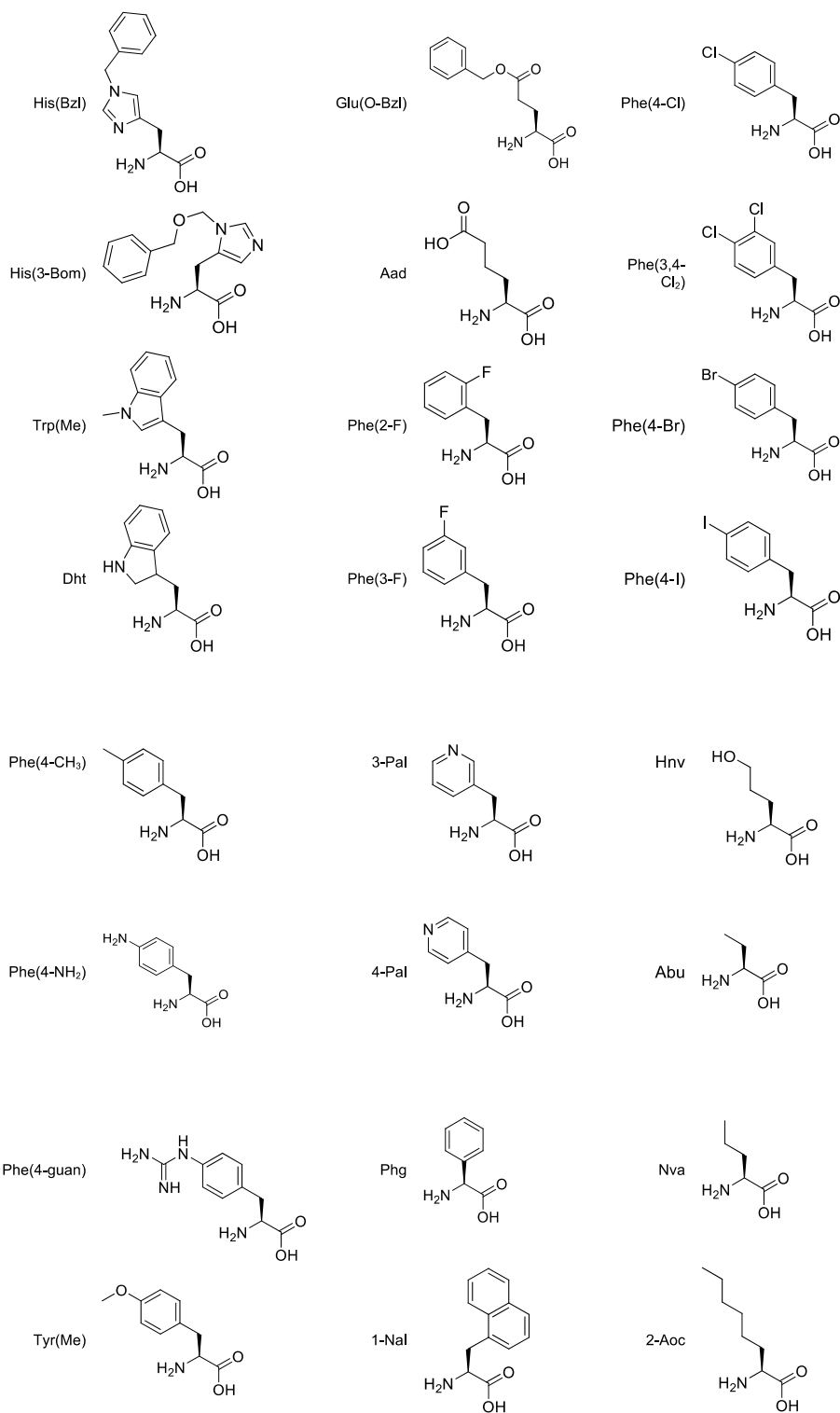
Dominika *et al.*: Mapping of substrate binding subsite specificity of a *Porphyromonas gingivalis* Tpr peptidase

Supplement: Proteinaceous and non-proteinaceous amino acid residues used to make the HyCoSul library

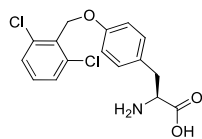




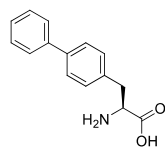




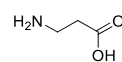
Tyr(2,6-Cl₂-O-Bzl)



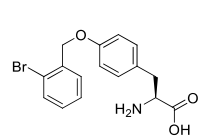
Bip



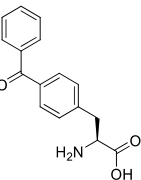
β-Ala



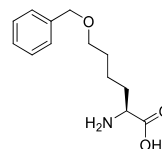
Tyr(2-Br-O-Bzl)



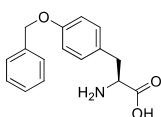
Bpa



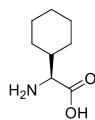
Nle(O-Bzl)



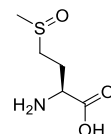
Tyr(O-Bzl)



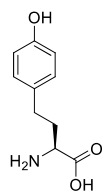
Chg



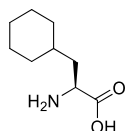
Met(O)



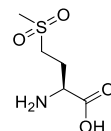
hTyr



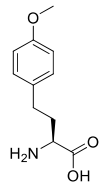
Cha



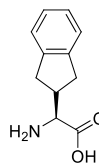
Met(O)₂



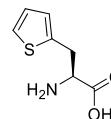
hTyr(O-Me)



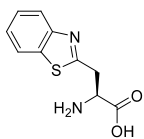
Igl



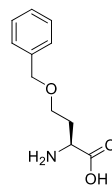
Ala(2-Thienyl)



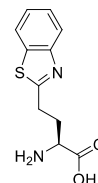
Ala(Bth)



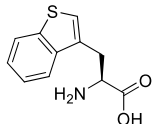
Hse(O-Bzl)



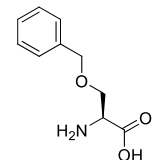
Abu(Bth)



Bta



Ser(O-Bzl)



Thr(O-Bzl)

